

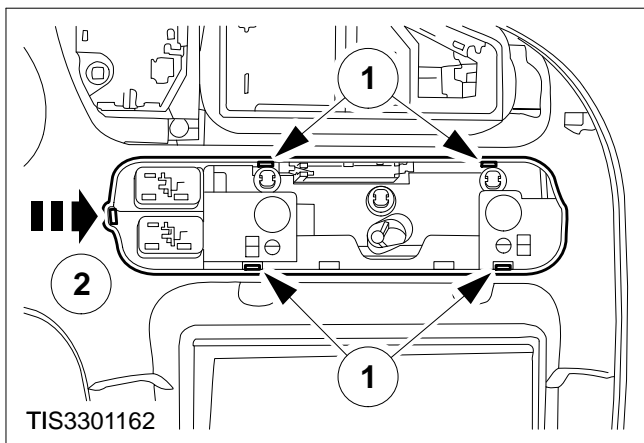
Switch – Blower Motor – Heater (High-Series) – Remove and Install (33 574 0)

NOTE: The heater blower motor switch fitted to high-series variants is incorporated in a multifunction switch assembly which also controls the driver and passenger temperature selection switches. The switch assembly cannot be separated.

Remove

⚠ CAUTION: Disconnect the battery negative lead.

1. Remove the instrument panel facia (refer to Operation Number 33 213 0).
2. Remove the heater blower motor switch assembly.
 - 1 Release the retaining clips.
 - 2 Slide to one side to disengage the locating tang.



Install

3. Refit the components in reverse order