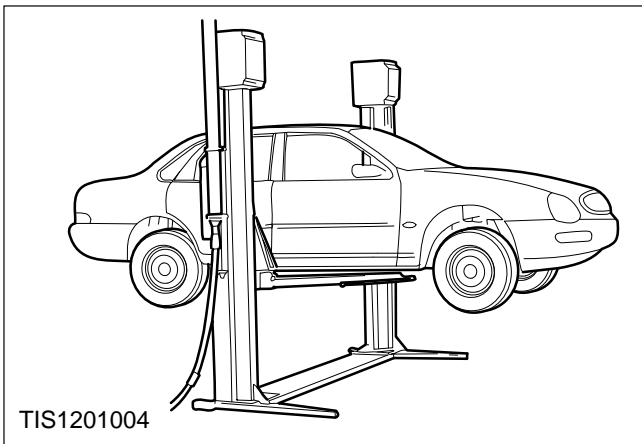
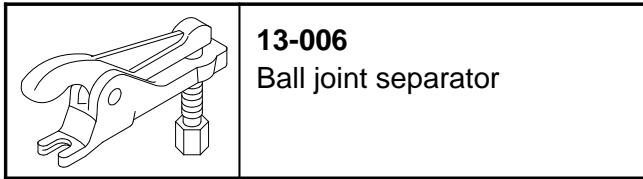


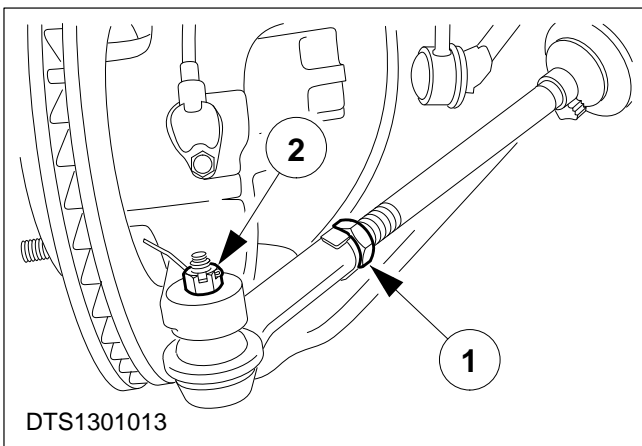
Bellows – Steering Gear – Remove and Install (13 134 0)

Special Tools



Remove

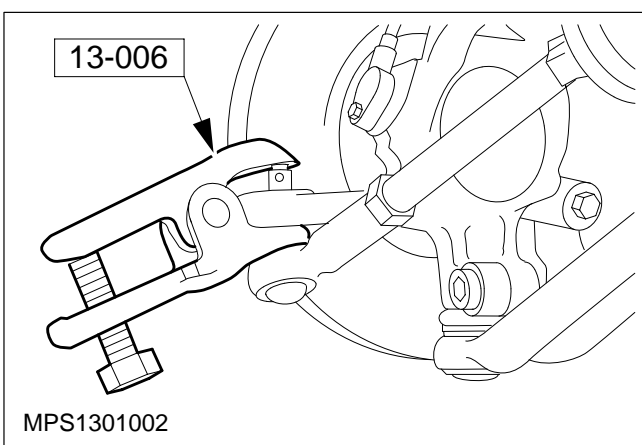
- 1. Slacken the wheel nuts, raise the vehicle and remove the road wheel.**



End – Track Rod – Remove (13 273 0)

- 2. Disconnect the track rod end.**

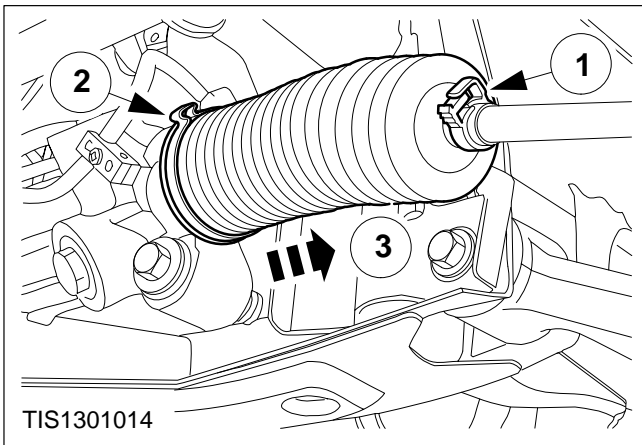
- Slacken the track rod end lock nut.
- Remove the split pin and castellated nut securing the track rod end ball joint to the spindle carrier.
 - Discard the split pin.



- 3. Release the track rod end ball joint from the spindle carrier.**

NOTE: Make a note of the number of turns required to remove the ball joint.

- Remove the ball joint.
- Remove the lock nut.



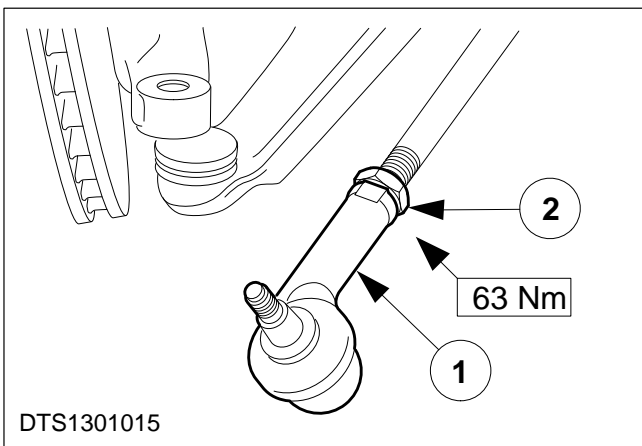
4. Remove the bellows.

- 1 Remove the bellows outer retaining clip.
- 2 Remove the bellows inner plastic clamp band.
- 3 Remove the bellows.

Install

CAUTION: If necessary clean the track rod.

5. Fit the new bellows and secure with new inner and outer clips.



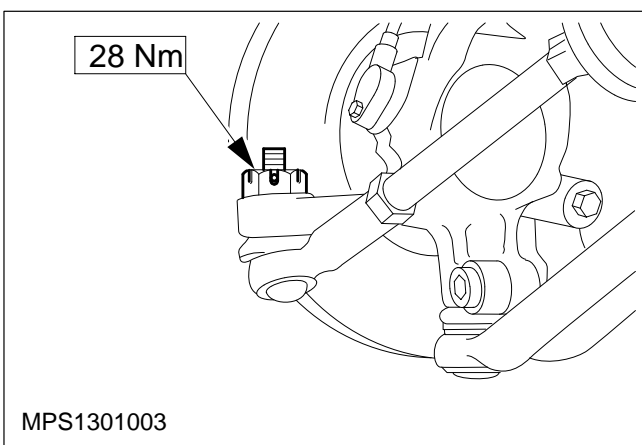
End – Track Rod – Install (13 273 0)

6. Refit the locknut and ball joint.

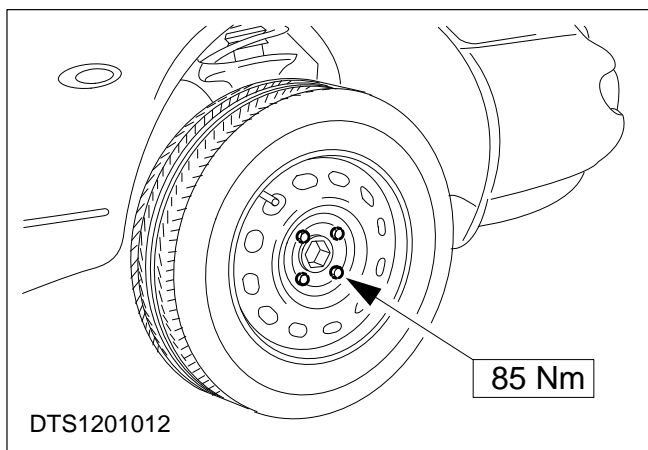
- 1 Refit the locknut.

NOTE: Ensure ball joint is screwed on the same number of turns as was used to remove it.

- 2 Refit the ball joint.
- 3 Tighten the locknut.



7. Refit the track rod end ball joint to the spindle carrier and secure the castellated nut with a new split pin.



- 8. Refit the road wheel, lower the vehicle and settle the suspension.**
- 9. Check the front wheel alignment (refer to Operation Numbers 14 111 0 and 14 111 3).**