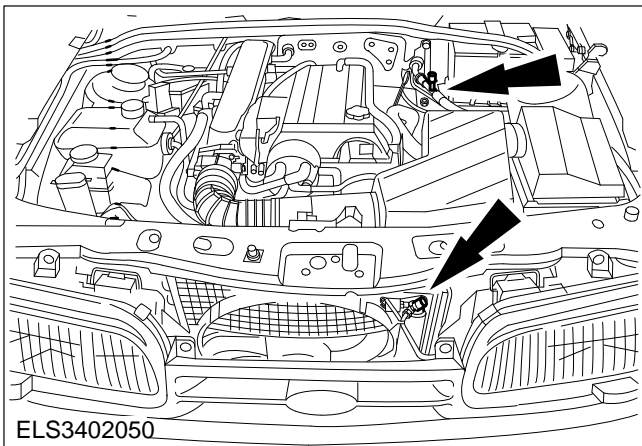


Refrigerant – Air Conditioning – Drain and Refill (34 620 0)

Workshop Equipment

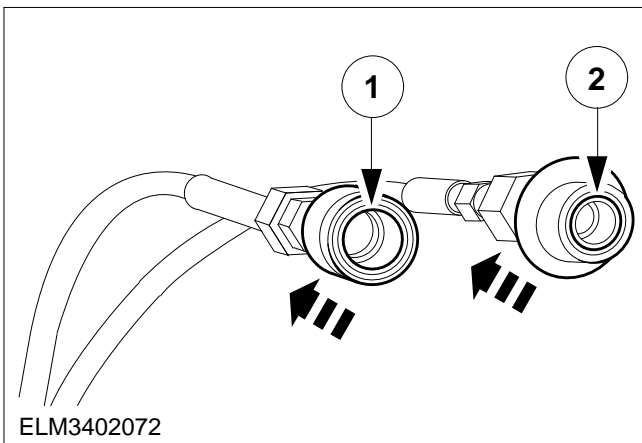
Servicing unit	
----------------	--



Drain and refill

NOTE: Safety Regulations, General Requirements, Safety Precautions for Servicing and Repairs at the beginning of this Section.

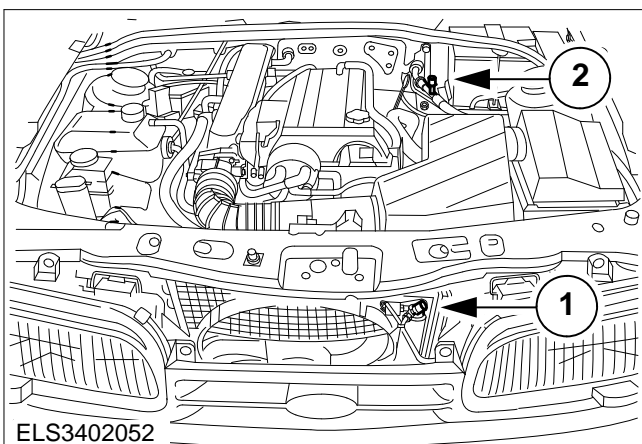
1. Unscrew the protective caps from the quick-release couplings.



2. Connect the lines of the servicing unit.

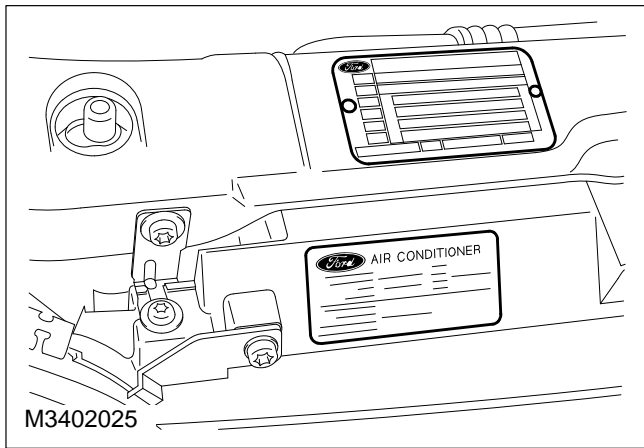
Unlock the quick-release coupling.

- 1 Larger inside diameter for the high-pressure side.
- 2 Smaller inside diameter for the low-pressure side.



3. Connect the lines of the servicing unit (continued).

- 1 Quick-release coupling attached on the high-pressure side.
- 2 Quick-release coupling attached on the low-pressure side.



4. Fill, drain and evacuate the air conditioning system.

⚠ CAUTION: The air conditioning system must always be evacuated before filling.

NOTE: Note the fill capacity indicated on the sticker.

Fill, drain and evacuate the air conditioning system following the instructions provided by the equipment manufacturer.