

Exhaust System (V6 24V) – Remove and Install (25 204 0)

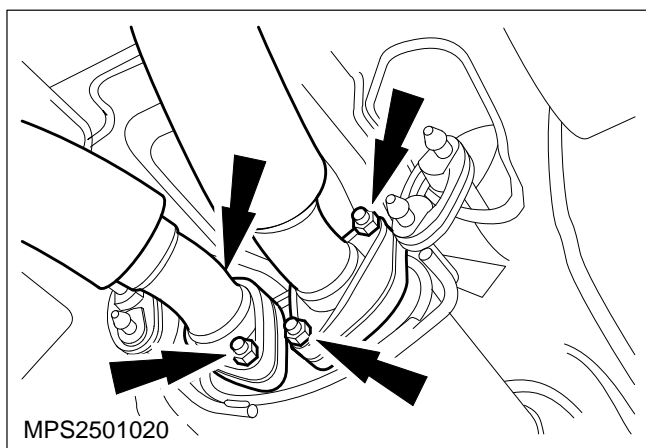
Material

Anti-seize grease	SAM-1C-9107A
-------------------	--------------

NOTE: The exhaust systems are of two-piece construction for production, including the downpipe/catalyst, and three or four piece construction for service replacement exhaust systems. However, for the purposes of this section only we will be referring to the exhaust system as that portion starting from the flange joint after the downpipe/catalyst and in front of the centre muffler. The downpipe/ catalyst will be referred to separately each time by its own name.

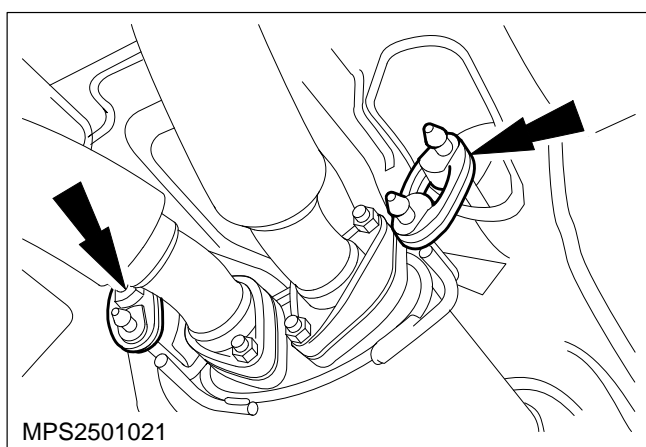
It is therefore necessary to cut the production exhaust to enable fitment of the replacement one or two piece rear muffler assembly.

The centre muffler of the production system cannot be replaced without also fitting a new rear muffler.



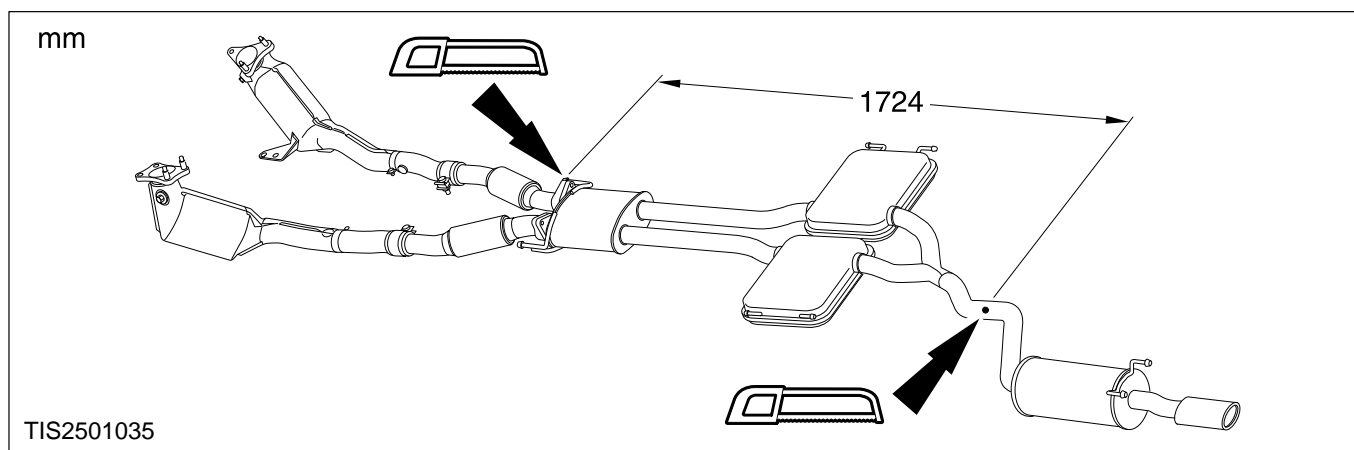
Remove
Muffler Assembly – Centre – Renew
 (Production System) (V6 12V) (25 233 0)
 and **Muffler – Rear – Renew** (One –
 Production System) (V6 24V) (25 243 0)

1. Disconnect the two muffler flanges (four nuts).



2. With the assistance of another technician remove the exhaust rear section.

- Unhook the two rear insulators.
- Unhook the two front insulators.
- Unhook the four centre insulators.



Install

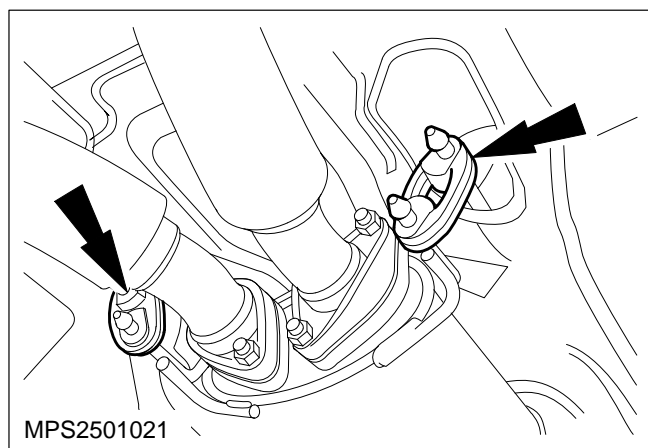
3. Cut the exhaust pipe as specified to suit the model type and extent of replacement.

4. Assemble the exhaust system.

Loosely connect the replacement exhaust components.

5. With the assistance of another technician refit the exhaust rear section.

- Examine the rubber insulators for damage/fatigue.
- Refit the four centre insulators.
- Refit the two front insulators.
- Refit the two rear insulators.



6. Fit the exhaust to the two catalyst/downpipes.

7. Check alignment of the system and tighten the four nuts.

